



Transrectal Ultrasound (TRUS) and biopsy of the prostate

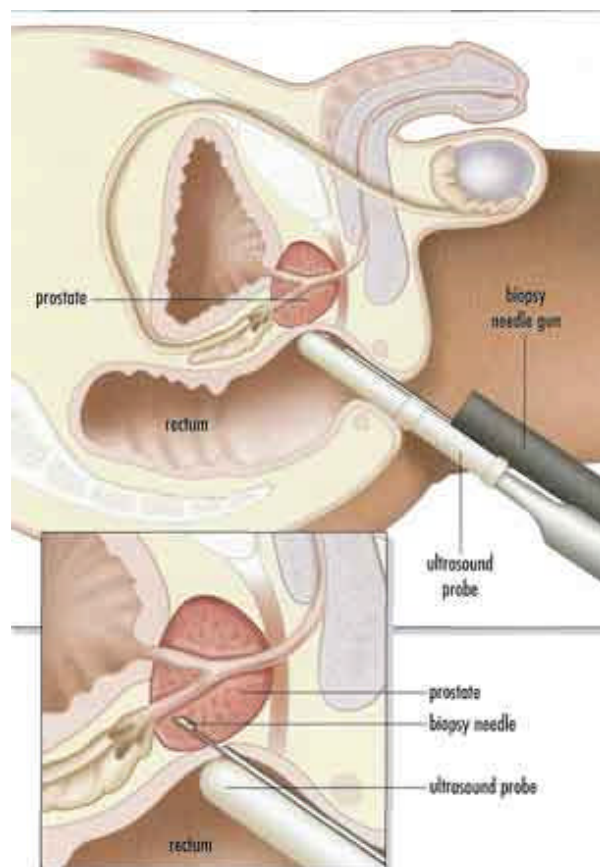
What is a transrectal ultrasound and biopsy of the prostate?

Your doctor has recommended that a small tissue sample (biopsy) be taken from your prostate gland.

This procedure is performed as a day case. You will need to arrive on the ward one hour before your biopsy so that antibiotics can be given to you. This is to try and prevent the development of an infection (see below).

In order to take the biopsy a special ultrasound probe is passed into the rectum (back passage) to scan and take pictures of the prostate. A transrectal biopsy involves passing a needle through the scanning probe, into the prostate, to remove a small core of tissue. The tissue sample will be sent to the laboratory to be looked at under a microscope.

Normally this procedure is performed without anaesthetic and is tolerated very well if 8 or less biopsies are taken. If the doctor needs to take more biopsies than this then an injection of local anaesthetic into the prostate will be given first



What can I expect after the biopsy?

It is very common to see a small degree of bleeding in the urine and maybe even a little blood when you have your bowels open. Blood may also be seen in the semen as well.

You should find that this quickly settles. It will help to clear the urine if you drink extra fluid for the first one or two days. **You should contact the urologist or ward if the bleeding persists beyond the second day at home, or if it gets visibly worse before that.**

You may also find that it may sting or irritate the urethra (water-pipe) the first few times that you pass urine after the biopsy. This should settle quickly. It may help to take some simple painkillers to help ease the discomfort. (e.g. - paracetamol. - follow the instructions on packet)

Some men find it a little difficult to pass urine after the biopsy, and this is one of the reasons we ask you to stay until you have passed urine. It is very uncommon for the flow to stop altogether ("retention" of urine) but if this happens either ring the ward or contact your General Practitioner.

You will be given a prescription for antibiotic tablets to be taken at home as infection after a biopsy is not uncommon. Symptoms such as a high temperature, feeling hot and then cold, shivers, or generally feeling unwell may be due to infection - **If you are suffering these symptoms, please contact the ward and inform them.**

What will happen next?

The biopsy result will take approximately 10 days to be sent back from the pathology laboratory. Your Consultant will make a follow-up arrangement for you before you are discharged from the ward.

Any questions?

If you have any questions, jot them down here and ask your GP or Urologist for answers.

DISCLAIMER

THE MOST STRENUOUS EFFORTS HAVE BEEN TAKEN TO ENSURE THAT THE INFORMATION CONTAINED WITHIN THESE PAGES IS FACTUALLY CORRECT AND CONTAINS UP TO DATE INFORMATION.

HOWEVER, NEITHER THE AUTHOR, ACTION4MENSHEALTH.CO.UK, NOR ANY OF THE PERSONS MENTIONED IN THESE PAGES WILL ACCEPT RESPONSIBILITY FOR ANY INJURY TO PERSONS OR PROPERTY WHICH MAY OCCUR AS A RESULT OF ADVICE OR IDEAS CONTAINED WITHIN THESE PAGES.

YOU ARE THEREFORE MOST STRONGLY ADVISED TO SEEK COMPETENT MEDICAL ADVICE FROM A REGISTERED MEDICAL OR SURGICAL PRACTITIONER